



## **CITY OF WILLIAMS LAKE EMERGENCY EVACUATION PLAN - PUBLIC**

*This plan is an appendix to the EVACUATION PLAN – CITY CORE TRAFFIC from RCMP*

### **SITUATION**

The wildfire in the vicinity of Williams Lake is threatening to breach established lines and enter the city. When the evacuation order is given, traffic will be routed north along Highway #97. This plan addresses the evacuation of the residents from within and through the city of Williams Lake, BC.

### **TRIGGER**

The order to evacuate will be called when the White Lake fire crosses from the west to the east side of the Fraser River.

### **OBJECTIVES**

- To communicate need for evacuation to 6,000 remaining residents and visitors
- To keep roads clear and drivable
- To facilitate safe and efficient evacuation

### **OVERALL STRATEGY**

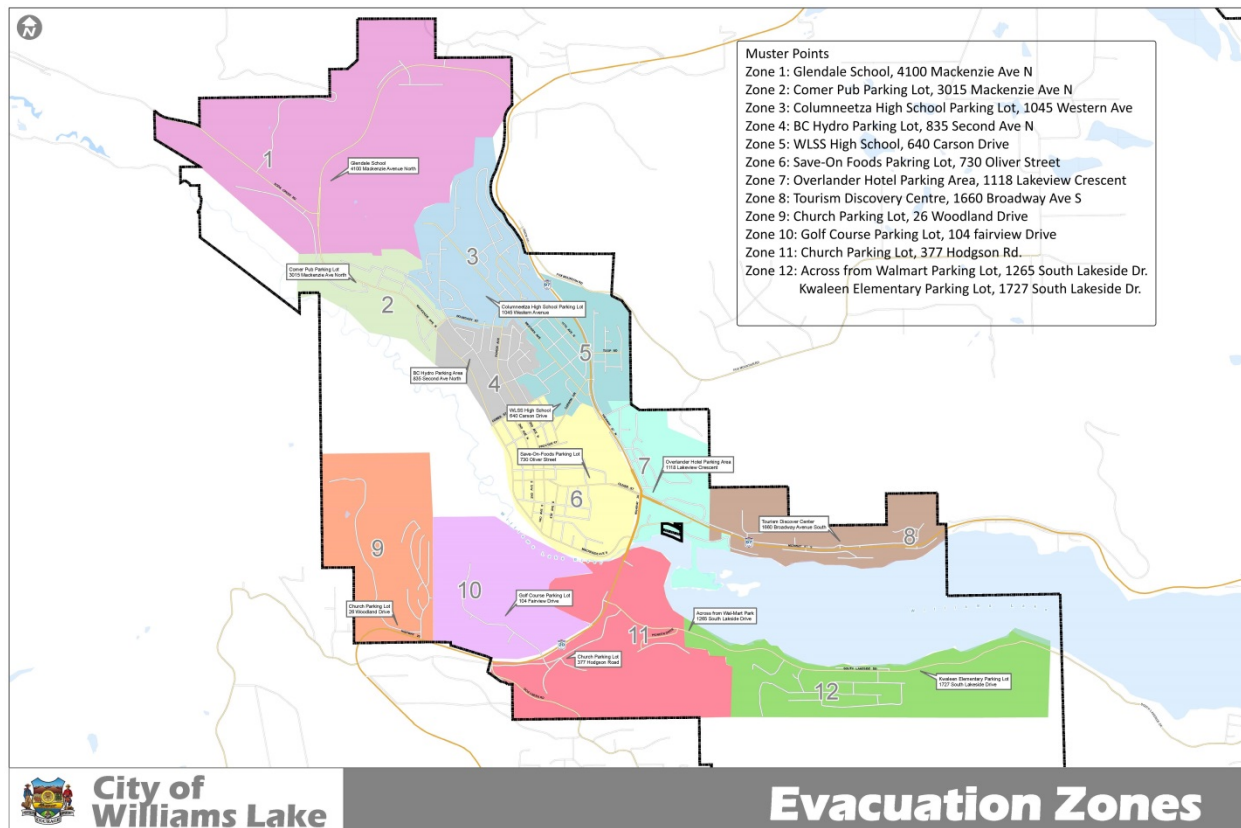
- Order to be disseminated through multiple channels (social media, radio, etc.) and through RCMP Door-to-Door notification.
- City staff have delivered cones to the 13 muster sites with signage. Bus drivers provided with laminated signage to take to their respective muster points and install them.
- Bus drivers to be picked up and brought to Williams Lake EOC on July 15<sup>th</sup> for briefing.
- Two-way radios to be distributed to bus drivers, RCMP, and EOC. FIRE channel.
- Bus drivers to be delivered to bus depot at 765 North 2<sup>nd</sup> Avenue, Williams Lake as soon as evacuation order is actioned.
- First 13 busses with drivers will head to respective muster points and wait.
- Remaining 7 busses and drivers will remain at the bus depot until busses at muster points are full.
- Once busses at muster points are full, drivers will radio to bus depot to request an additional bus. In the event that a bus is almost fully occupied, the bus driver will radio the EOC ahead of time to get a spare bus dispatched to the location.
- All bus drivers with the ability to pick up additional passengers should radio the EOC to see if they are required to go to another zone that requires additional pick-up capacity.
- In the event that RCMP and SAR members find residents required to be moved during their door to door visits, they should communicate on the radio for required pick-ups as needed. EOC will communicate with bus drivers and send buses to the respected locations as needed.
- Small busses to pick up non-mobile evacuees and deliver to muster points throughout the City. Muster point locations are identified below.
- Bus drivers will be guided by barricades and RCMP towards Highway 97 from the City roads.



## TRAFFIC CIRCULATION

As discussed earlier, the City has been divided into 12 evacuation zones. Each zone has one muster point, with the exception of South Lakeside Drive Zone 12 which has two muster locations as shown below. The bus drivers will be driven to the bus garage on 2<sup>nd</sup> Avenue located 765 2<sup>nd</sup> Avenue North. There are 20 bus drivers available for 20 buses, including seven (7) spare buses.

- Thirteen (13) buses will be dispatched to 13 muster points.
- The dispatched bus drivers will relay information about overflow muster points so that the spare buses can be dispatched to the locations as required.
- The bus drivers will be routed as per the RCMP City Core Traffic Evacuation Plan.
- The buses will take the evacuees to College of New Caledonia in Prince George (address below).



## LOCATION OF MUSTER POINTS BY ZONE

1. Glendale School (4100 Mackenzie Avenue North)
2. Comer Pub Parking Lot (3015 Mackenzie Avenue North)
3. Columneetza High School Parking Lot (1045 Western Avenue)
4. BC Hydro Parking Area (835 Second Avenue North)
5. WLSS High School (640 Carson Drive)
6. Save-On-Foods Parking Lot (730 Oliver Street)
7. Overlander Hotel Parking Area (1118 Lakeview Crescent)



8. Tourism Discover Centre (1660 Broadway Avenue South)
9. Church Parking lot (26 Woodland Drive)
10. Golf Course Parking Lot (104 Fairview Drive)
11. Church Parking Lot (377 Hodgson Road)
12. Across from Wal-Mart Parking Lot (1265 South Lakeside Drive)  
Kwaleen Elementary School Parking Lot, 1727 South Lakeside Drive



*Muster points are marked with signage and high-visibility barrels.*

#### **DURATION AND FREQUENCY OF PICK-UP**

Buses will wait at muster points until RCMP has done a sweep of all zones and has determined that each zone is evacuated. RCMP will be communicating this information to the bus drivers of the respective zone and ask them to leave. All buses will be equipped with water and other essentials as possible. In the event that the buses are on standby at the muster points for a significant amount of time and passengers require using washrooms, there will be smaller sized buses available that will take them to the following public washroom facilities and bring them back to the muster zones.

- Kiwanis Park, 198 Fourth Avenue North, Zone 6
- Boitanio Park, Zone 6
- Spirit Square, 109 Oliver Street, Zone 6
- Scout Island, 1305 A Borland Road, Zone 8

In the event that a bus is almost fully occupied, the bus driver will radio the EOC ahead of time to get a spare bus dispatched to the location. All bus drivers with the ability to pick up additional passengers should radio the EOC to see if they are required to go to another zone that requires additional pick-up capacity. In the event that RCMP and SAR members find residents required to be moved during their



door to door visits, they should communicate on the radio for required pick-ups as needed. EOC will communicate with bus drivers and send buses to the respected locations.

### **DROP-OFF LOCATION**

All evacuees will be dropped off at the Emergency Services Centre (ESS) in Prince George.

- College of New Caledonia - 3330 22<sup>nd</sup> Avenue, Prince George.

### **INOPERATIVE VEHICLES**

In the event of a vehicle mechanical breakdown along the egress route, a tow truck will move the vehicle from the egress route into a side street and out of the flow of traffic. Occupants will be taken by spare buses or smaller sized buses to:

- Columneetza High School Parking Lot (1045 Western Avenue)
- Save-On-Foods Parking Lot (730 Oliver Street)
- Overlander Hotel Parking Area (1118 Lakeview Crescent)

Tow truck contingency: If no tow trucks are available, city staff may be required to use a plow to clear the highway for egress.

### **COMMUNICATION**

All the bus drivers will be provided with maps of assigned zones and an overall map of all the zones. The primary method of communication will be wireless radio. The wireless radios will establish communication among bus drivers, City of WL EOC, Structural Firefighters, and the RCMP. Secondary method of communication will be cell phone numbers as provided in the key personnel contacts.

### **RESOURCES REQUIRED**

Wireless Radios: Total 6

- RCMP: Three (3) at the Command Centre
- City of Williams Lake EOC: Three (3) for operations
- Bus Drivers are expected to have built in radios on the buses
- Structural Firefighters: already provided

Frequency of Radio:

Channel: FIRE

### **PICK-UP FOR PERSONS WITH MOBILITY ISSUES**

Each bus can carry up to two (2) disabled people. There will be one small sized bus that will be dispatched to pick people up with mobility issues. The City has created a list for people with mobility issues as they have registered at the Emergency Services Centre. There are currently 5 people in total on this list. In the event, RCMP finds additional people with mobility issues, they will communicate with the City EOC so that arrangements can be made for the spare buses or the smaller sized buses to pick them up.



Name	Phone	Address	Muster
Personal information redacted from this version			Green Acres Mall
			WL Secondary School
			Columneetza
			Save on Foods
			Tourism Centre (TDC)

**KEY PERSONNEL** [phone numbers redacted]

- City of Williams Lake EOC , Gary Muraca Joe Engleberts [insert phone number]
- Randy Cobb (Bus Coordinator): [insert phone number]
- RCMP Command Centre: 250 392 8729
- RCMP Detachment Centre: 250 382 6211
- Emergency Operations Centre: 250 392 2364/ 250 392 2365